

SPEC SHEET + MEASUREMENTS



Nike Club Fleece Sleeve Swoosh Crew. NKFD9863

Product photo



Lightweight with a brushed back, this crew feels extra soft on the inside and smooth on the outside.

- 8.3-ounce, 80/20 cotton/polyester
- Rib knit collar, cuffs and hem
- Contrast embroidered Swoosh logo on left sleeve

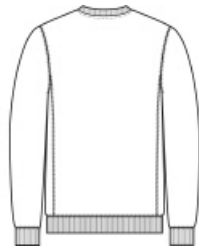
CARE INSTRUCTIONS

Machine Wash Cold. Wash With Like Colors. Do Not Use Softeners. Do Not Use Bleach. Tumble Dry Low. Do Not Iron. Do Not Dry Clean.

Sketches



front



back

SPEC SHEET + MEASUREMENTS



Nike Club Fleece Sleeve Swoosh Crew. NKFD9863

PRODUCT MEASUREMENTS

	XS	S	M	L	XL	2XL	3XL	4XL
Body Length at Back	26 3/4	27 1/8	27 1/2	28 3/8	29 1/8	29 7/8	30 3/4	31 1/2
Chest	20	21 5/8	23 1/8	24 3/4	26 3/4	28 5/8	30 5/8	32 5/8
Set in Sleeve Length	25 3/8	25 5/8	25 7/8	26 1/8	26 3/8	26 5/8	26 7/8	27

Body Length at Back: Measured from high point shoulder to finished hem at back.

Chest: Measured across the chest one inch below armhole when laid flat.

Set in Sleeve Length: Measure from Center Back neck to shoulder point to sleeve hem.

SIZE CHARTS

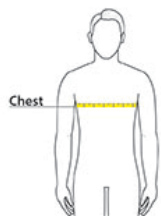
	XS	S	M	L	XL	2XL	3XL	4XL
Chest	32-35	35-37 1/2	37 1/2-41	41-44	44-48 1/2	48 1/2 -53 1/2	53 1/2 - 58	58-63

SPEC SHEET + MEASUREMENTS



Nike Club Fleece Sleeve Swoosh Crew. NKFD9863

HOW TO MEASURE



CHEST

Measure under the arm and around the fullest part of the chest with arms down, keeping tape horizontal.

COLORS



Anthracite
PMS 432C



Black
PMS BLACK
C

CharcoalHt



Dark Grey
Heather
PMS 422C



Game Royal
PMS 2758C

Khaki

MediumOliv



Midnight Navy
PMS 533C

StadiumGn

UniRed



White